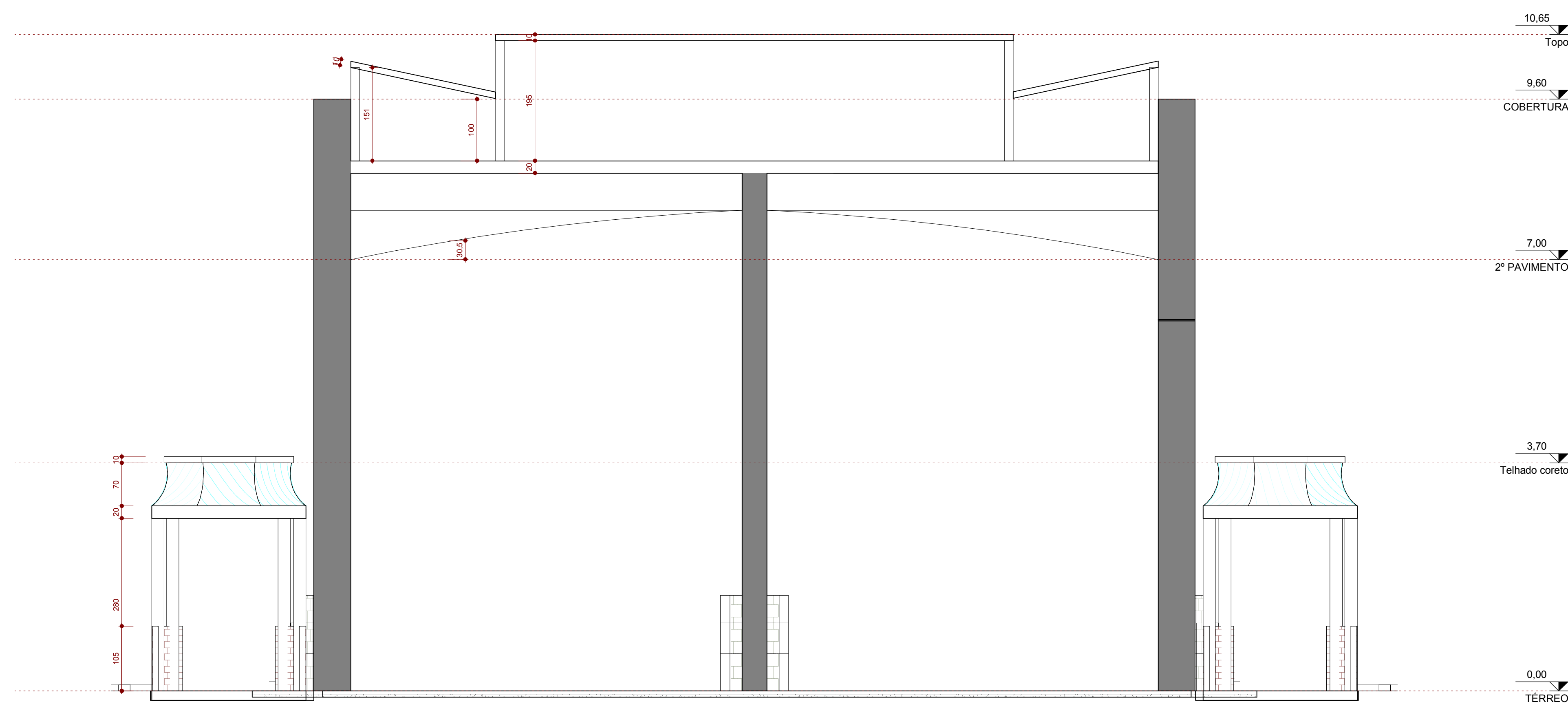
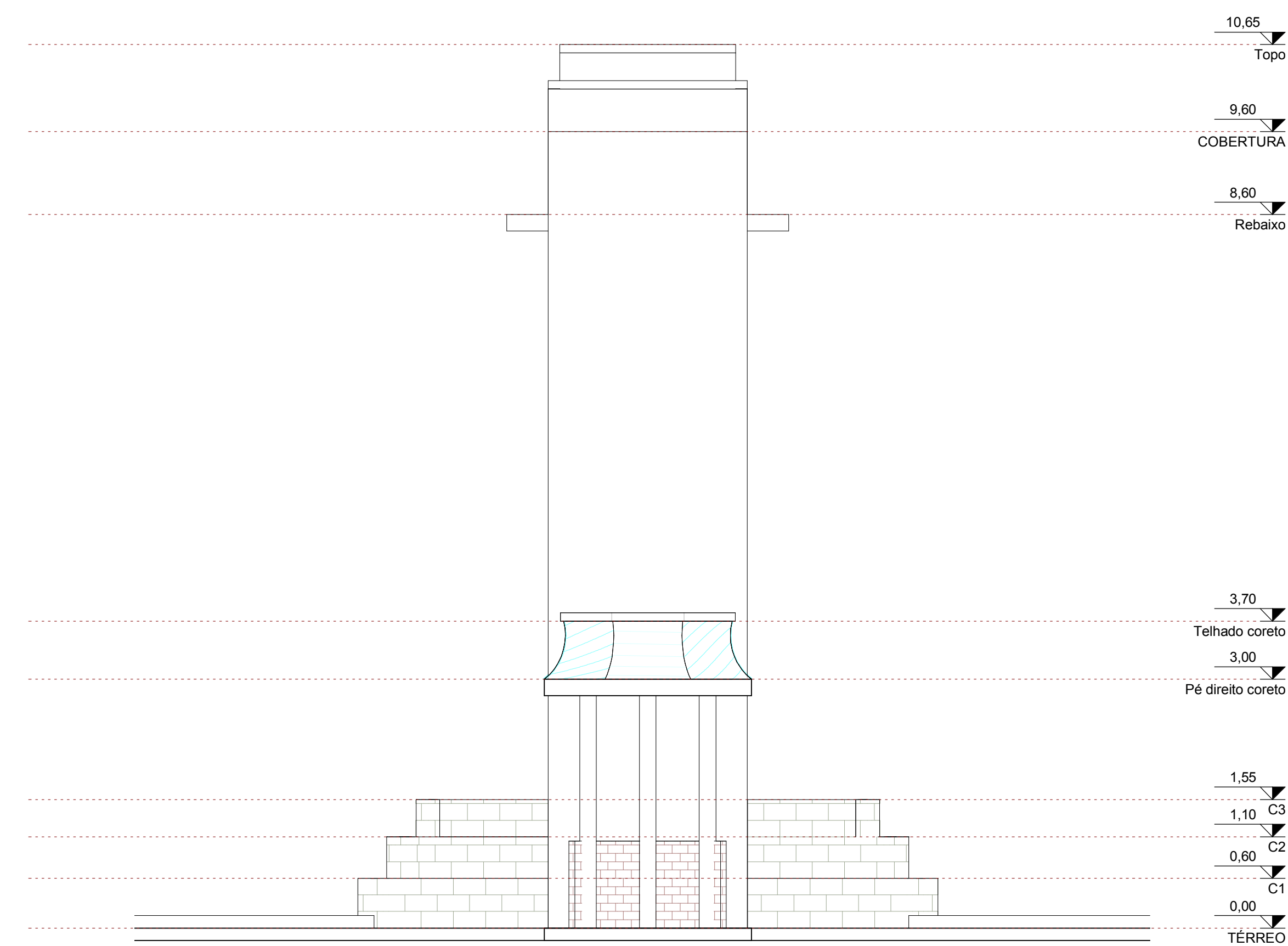


1 **TÉRREO**  
ESCALA - 1 : 50



2 **BB'**  
ESCALA - 1 : 50

4 **COBERTURA**  
ESCALA - 1 : 50



3 **AA'**  
ESCALA - 1 : 50

10.65  
Topo  
9.60  
COBERTURA  
8.60  
Rebaxo  
3.70  
Telhado coreto  
3.00  
Pé direito coreto  
1.55  
C3  
1.10  
C2  
0.60  
C1  
0.00  
TÉRREO